

### Highlights



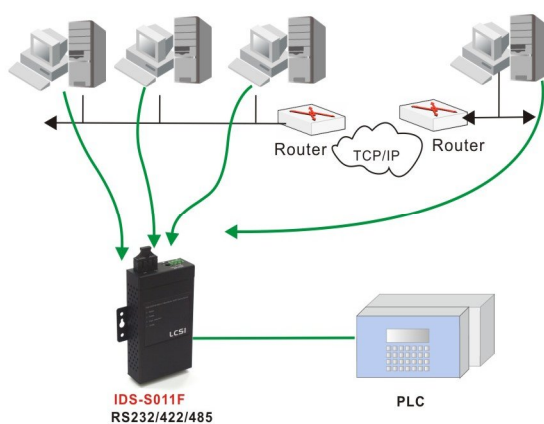
- NAT pass through: User can manage IDS-S011F through NAT router
- Redundant Power inputs: 12-48VDC on power jack and terminal block
- Secured management by HTTPS and SSH
- Redundant multiple host devices: 5 simultaneous in virtual COM, TCP Server, TCP Client mode, UDP
- Event warning by syslog, Email, SNMP trap and Beeper
- Versatile Serial Modes :Virtual Com, TCP server, TCP Client, UDP , Serial Tunnel
- DS-Tool windows utility can simplify your device management
- Best usage for POS, Card reader, PLC, HMI, Medical instrument..etc

### Features

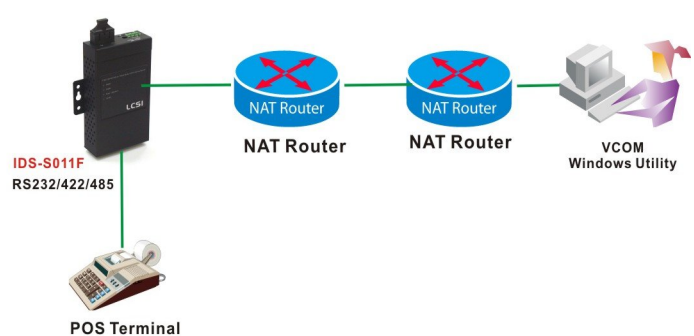
- **Management (DS-Tool)**
    - Device recovery
    - Device setting
    - Group setting
    - Serial port monitoring
    - Group Firmware upgrade
  - **Serial Mode**
    - Virtual Com
    - TCP Client
    - Serial Tunnel
  - **Multiple Link**
    - Virtual Com/ TCP server/ TCP Client
  - **Configuration**
    - Web HTTP console
    - SSH console
    - DS-Tool for Windows NT/2000/Xp/VISTA
  - **Security**
    - HTTPS, SSH
    - Event warning by Syslog, Email, SNMP Trap and Beeper
- Auto IP report  
Access control list  
Device monitoring  
Log info
- TCP Server  
UDP

### Applications

#### Redundancy 5 host devices



#### NAT router Pass Through



## 1 Port RS-232 / 422 / 485 port to 1 Port multi-mode 100Base FX Device Serve

Specification

Ethernet Interface		Power	
Connector	multi-mode 100Base FX	Input	PWR 1: 12-48 VDC power jack for PWR adapter
Speed	100Mbps		PWR 2: 12-48 VDC 3 pin terminal block
Serial Interface		Power Consumption	4Watt Max.
Connector	1 x RS232/RS422/RS/485, Male DB-9	Reverse Polarity Protection	Present at terminal block
Serial Line Protection	Protection: Build-in 15KV ESD protection	Mechanical	
Serial Baud Rate	110bps to 460.8Kbps	Casing	Metal Case with IP-30 protection
Data Bits	5, 6, 7, 8	Dimensions	72mm(W) x100mm(D)x31mm (H)
Stop Bits	1, 1.5, 2	Installation	wall mount or DIN-type
Parity	Odd, even, none, mark, space	Environment	
Flow control	XON/XOFF, RTS/CTS, DTR/DSR	Operating Temperature	Standard: (-10°C-60°C)
Serial Signals	RS-232: TxD, RxD, RTS, CTS, DTR, DSR, DCD, GND	Storage Temperature	-20°C-85°C
	RS-422: Tx+, Tx-, Rx+, Rx-, GND	Ambient Relative Humidity	5%-95% (Non-condensing)
	RS-485-4w: Tx+, Tx-, Rx+, Rx-, GND	Regulatory Approvals	
	RS-485-2w: Data+, Data-, GND	Safety	UL, cUL, FCC Class A , EN55022
LED Indicators		EMS	CE EN61000-4-2 (ESD),
	PWR 1		CE EN61000-4-3 (RS),
	PWR 2		CE EN61000-4-4 (EFT)
	Fault		CE EN61000-4-5 (Surge)
	Fiber Port Link /ACT		CE EN61000-4-6 (CS)
	Serial Port TX/RX	Environmental Test	IEC60068-2-32(Freefall)
			IEC60068-2-27 (Shock)
			IEC60068-2-6 (Vibration)

Ordering information

P/N 5425-001	IDS-S011F	1 Port RS-232 / 422 / 485 port to 1 Port multi-mode 100Base FX Device Serve
--------------	-----------	---