

6 x 10/100BaseTX +2 x 100Base FX Managed Industrial Switch w/X-Ring 300ms



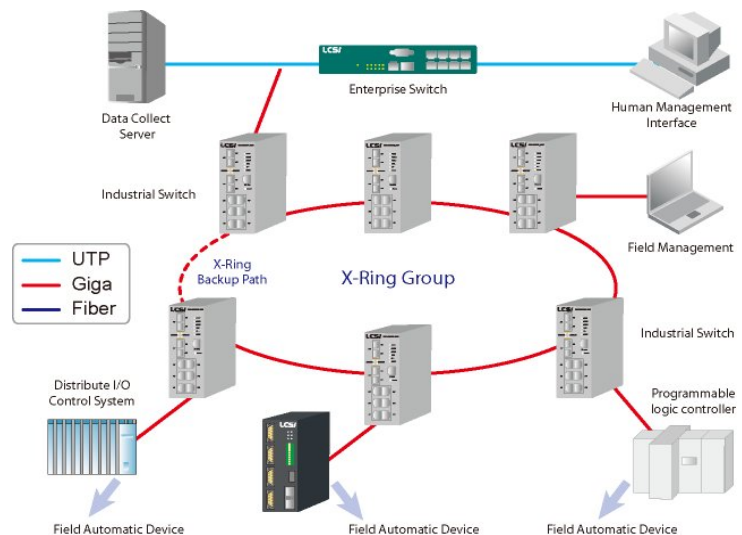
Highlights

- Flexible ring topology for faster fault recovery speed (Recovery time below 300 ms)
- Supports X-Ring 300ms, Ring Coupling, Dual Homing,
- Redundant power inputs guarantee a non-stop operation
- 2 redundant power inputs on power jack
- Available rugged design for -40 to 75°C operating Temp.

X-Ring Application

X-Ring 300ms support the fastest redundant recovery time which make a non-stop Ethernet connection.

If the primary communication path is disconnected the redundant ring technology provides a redundant path in the network. The following figure is a sample X-Ring 300ms application



Features

- Management
 - SNMP v1 v2c, Web Management
- System Interface/Performance
 - RJ-45 port supports Auto MDI/MDI-X Function
 - Store-and-Forward Switching Architecture
 - Back-plane (Switching Fabric): 1.6Gbps
- VLAN
 - Port Based VLAN
 - Support 802.1 Q Tag VLAN
 - Both port and Tag support up to 64 group
- Security
 - Support 10 IP address that have permission to access the switch management
- QoS (Quality of Service)
 - Support IEEE 802.1p Class of Service,
 - Per port provides 4 priority queues
 - Port Base, Tag Base and Type of Service Priority
- X-Ring
 - X-Ring 300ms, Dual Homing, Couple Ring
 - Provide redundant backup feature and the recovery time below 300ms
- Provide DHCP Client functions
- Support TFTP firmware update, TFTP backup and restore.
- Support NTP to synchronize system clock in Internet
- Support IGMP V1 query up to 256
- Support port mirroring types- TX and both TX and RX packet

6 x 10/100BaseTX +2 x 100Base FX Managed Industrial Switch

Specification

Technology		Interface	
Standards	IEEE 802.3 10Base-T Ethernet	LED Indicators	Per Port: Link/Activity(Green), Full Duplex/ Collision (Yellow) Per unit: Power (Green), Power 1(Green), Power 2(Green), Fault (Yellow), Master (Green)
	IEEE 802.3u 100BaseTX, 100BaseFX		
	IEEE802.3x Flow Control and Back Pressure	RJ45 Ports	6 x 10/100 Base-T(X), Auto MDI/MDIX
	IEEE802.1d Spanning Tree	Fiber Ports	2 x100FX SC-multi-mode distance: 2km or 30km
	IEEE802.1p Class of Service	Terminal Block	Redundant power input design with alarm system
	IEEE802.1Q VLAN Tag	Mechanical	
Processing Type	Store-and-Forward	Casing	IP 30 Protection Metal Case
Address Table Size	8K MAC addresses	Dimensions	54mm(W)x105mm(D)x135mm(H)
Power		Installation	DIN Rail and Wall Mount Design
Input	PWR1/2: 12-48VDC	Regulatory Approvals	
		Safety	FCC Part 15, CISPR (EN55022) class A
Power Consumption	10 Watts Max	EMS	EN61000-4-2 (ESD)
Reverse Polarity Protection	Present		EN61000-4-3 (RS),
Environment			EN61000-4-4 (EFT)
Operating Temperature	Standard : -10 to 60°C		EN61000-4-5 (Surge) Level 3
	E version: -40 ~75°C	EN61000-4-6 (CS), Level 3	
Storage Temperature	-40 to 85°C (-40 to 185° F)	Environmental Test	IEC60068-2-27 (Shock)
Ambient Relative Humidity	5% to 95% (Non-condensing)		IEC60068-2-32 (Free Fall)
			IEC60068-2-6 (Vibration)

Ordering information

- IES-M062F(SC/MM) -300 P/N: 8350-220
6 x 10/100BaseTX +2 x 100Base FX SC multi-mode 2km managed Industrial Switch, -10C to 60C
- IES-M062F(SC/SM30) -300 P/N: 8350-225
6 x 10/100BaseTX +2 x 100Base FX SC Single-mode 30Km managed Industrial Switch, -10C to 60C
- IES-M062FE (SC/MM) -300 P/N: 8350-221
6 x 10/100BaseTX +2 x 100Base FX SC multi-mode 2km managed Industrial Switch, -40C to 75C
- IES-M062FE (SC/SM30)-300 P/N: 8350-226
6 x 10/100BaseTX +2 x 100Base FX SC Single-mode 30Km managed Industrial Switch, -40C to 75C