

## 6 x 10/100BaseTX + 2 x 100Base FX w/X-Ring Managed Industrial Switch



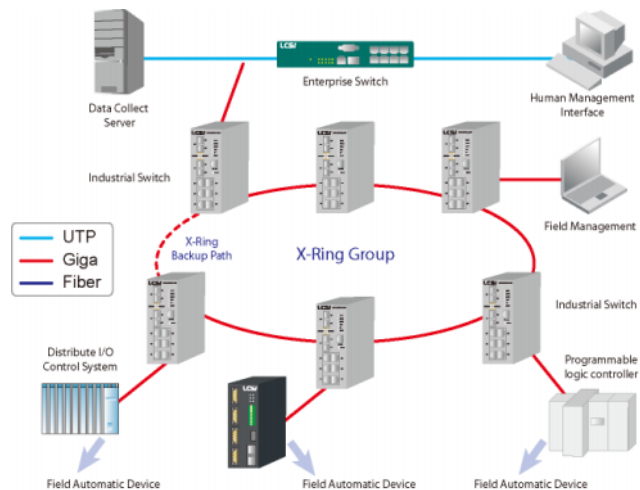
### Highlights

- Flexible ring topology for faster fault recovery speed (Recovery time below 20 ms)
- Supports Ring Coupling, Dual Homing, X-Ring
- Optional LCSI management utility to simplify your network Management
- Redundant power inputs guarantee a non-stop operation
- 2 redundant power inputs on power jack and terminal block
- Available rugged design for -40 to 70°C operating Temp.

### X-Ring Application

X-Ring support the fastest redundant recovery time which make a non-stop Ethernet connection.

If the primary communication path is disconnected the redundant ring technology provides a redundant path in the network. The following figure is a sample X-Ring application



### Features

- Management
  - SNMP v1 v2c, v3/ Web/Telnet/CLI
- System Interface/Performance
  - RJ-45 port supports Auto MDI/MDI-X Function
  - Store-and-Forward Switching Architecture
  - Back-plane (Switching Fabric): 1.6Gbps
- VLAN
  - Port Based VLAN
  - Support 802.1 Q Tag VLAN
  - GVRP
- Security
  - Port Security: MAC address entries/filter
  - IP Security: IP address security management to prevent unauthorized intruder.
  - Login Security: IEEE802.1X/RADIUS
- QoS (Quality of Service)
  - Support IEEE 802.1p Class of Service,
  - Per port provides 4 priority queues
  - Port Base, Tag Base and Type of Service Priority
- X-Ring
  - X-Ring, Dual Homing, Couple Ring and Central Ring Topology
  - Provide redundant backup feature and the recovery time below 20ms
- Provide DHCP Client/ DHCP Server functions
- Support TFTP firmware update, TFTP backup and restore.
- Port Trunk with LACP
- Support SNTP to synchronize system clock in Internet
- Support IGMP snooping and query for multi media
- Support 3 port mirroring types - RX ;TX and both packet

## 6 x 10/100BaseTX +2 x 100Base FX Managed Industrial Switch

### Specification

Technology		Interface	
Standards	IEEE 802.3 10Base-T Ethernet	LED Indicators	Per unit :PWR, RM, Ring, Fault
	IEEE 802.3u 100BaseTX, 100BaseFX		RJ45 Port : Link/Activity, Full duplex/collision
	IEEE802.3x Flow Control and Back Pressure		Fiber Port :Link, Activity
	IEEE802.3ad Port trunk with LACP	RJ45 Ports	6 x 10/100 Base-T(X), Auto MDI/MDIX
	IEEE802.1d Spanning Tree	Fiber Ports	2 x100FX SC-multi-mode distance: 2km
	IEEE802.1w Rapid Spanning Tree	Console	1x RJ45 connector
	IEEE802.1p Class of Service	Terminal Block	Redundant power input design with alarm system
	IEEE802.1Q VLAN Tag	Power Jack	Optional DC power adapter
	IEEE 802.1x User Authentication -Radius	<b>Mechanical</b>	
Processing Type	Store-and-Forward	Casing	IP 30 Protection Metal Case
Address Table Size	8K MAC addresses	Dimensions	52mm(W)x106mm(D)x144mm(H)
<b>Power</b>		Installation	DIN Rail and Wall Mount Design
Input	PWR1/2: 12~48VDC	<b>Regulatory Approvals</b>	
	PWR3: 12~45VDC	Safety	FCC Part 15, CISPR (EN55022) class A
Power Consumption	10 Watts Max	EMS	EN61000-4-2 (ESD)
Reverse Polarity Protection	Present		EN61000-4-3 (RS),
<b>Environment</b>			EN61000-4-4 (EFT)
Operating Temperature	Standard : -10 to 60°C	Environmental Test	EN61000-4-5 (Surge) Level 3
	E version: -40 ~75°C		EN61000-4-6 (CS), Level 3
Storage Temperature	-40 to 85°C (-40 to 185° F)		IEC60068-2-27 (Shock)
Ambient Relative Humidity	5% to 95% (Non-condensing)		IEC60068-2-32 (Free Fall)
			IEC60068-2-6 (Vibration)

### Ordering information

- IES-M062F(SC/MM) .....P/N: 5350-220  
6 x 10/100BaseTX +2 x 100Base FX SC multi-mode 2km managed Industrial Switch, -10C to 60C
- IES-M062F(SC/SM30) .....P/N: 5350-225  
6 x 10/100BaseTX +2 x 100Base FX SC Single-mode 30Km managed Industrial Switch, -10C to 60C
- IES-M062FE(SC/MM) .....P/N: 5350-221  
6 x 10/100BaseTX +2 x 100Base FX SC multi-mode 2km managed Industrial Switch, -40C to 75C
- IES-M062FE(SC/SM30) .....P/N: 5350-226  
6 x 10/100BaseTX +2 x 100Base FX SC Single-mode 30Km managed Industrial Switch, -40C to 75C