

8 10/100TX+ 2 10/100/1000T/Dual Speed SFP Combo w/8 PoE Injectors w/X-Ring Managed Industrial Switch



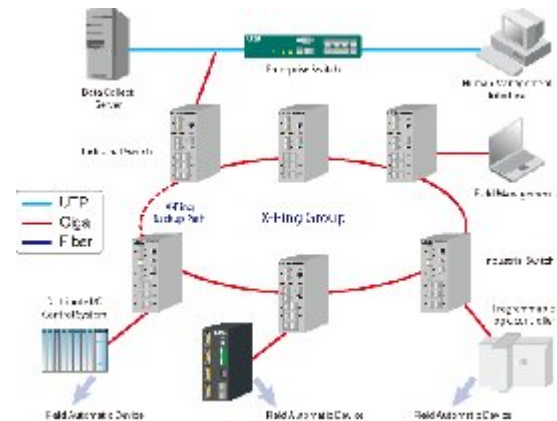
Highlights

- Embedded 8-port PoE injector function
- **Dual Speed** (100M and 1000M)SFP Combo with **X-ring**
- **Extreme-fast** ring fault recovery for less than 20ms
- Supports Ring Coupling, Dual Homing, X-Ring
- Optional window base utility to simplify your Network management
- 48V Redundant power inputs design
- Available rugged design for -40 to 75°C operating Temp.

X-Ring Application

X-Ring support the fastest redundant recovery time which make a non-stop Ethernet connection.

If the primary communication path is disconnected the redundant ring technology provides a redundant path in the network. The following figure is a sample X-Ring application



Features

- Management
 - SNMP v1 v2c, v3/ Web/Telnet/CLI
- VLAN
 - Port Based VLAN
 - Support 802.1 Q Tag VLAN
 - GVRP
 - Double Tag VLAN (Q in Q)
 - Optional Private VLAN
- Security
 - Port Security: MAC address entries/filter
 - IP Security: IP address security management to prevent unauthorized intruder.
 - Login Security: IEEE802.1X/RADIUS
 - System log
 - SMTP: Support SMTP Server and 6 e-mail accounts for receiving event alert
 - Relay Alarm
 - SNMP Trap
- Bandwidth control
 - Support ingress packet filter and egress packet limit
 - Flow control: Support Flow Control for Full-duplex and Back Pressure for Half-duplex
- QoS (Quality of Service)
 - Support IEEE 802.1p
 - Port Base, Tag Base and Type of Service Priority
- Class of Service: per port provides 4 priority queues
- X-Ring
 - X-Ring, Dual Homing, Couple Ring and Central Ring Topology
 - Provide redundant backup feature and the recovery time below 20ms
- Spanning Tree
 - Support IEEE802.1d Spanning Tree
 - Support IEEE802.1w Rapid Spanning Tree
- IGMP snooping
 - Support IGMP snooping v1,v2
 - 256 multicast groups and IGMP query
- DHCP: Provide DHCP Client/ DHCP Server / Port, IP Binding
- TFTP firmware update, TFTP backup and restore.
- Port Trunk with LACP
- Support SNTP to synchronize system clock in Internet
- Support 3 port mirroring types- RX ;TX and both packet
- Optional LLDP
- DNS: Provide DNS client feature and support Primary and Secondary DNS server

8 10/100TX+ 2 10/100/1000T/Dual Speed SFP Combo w/8 PoE Injectors
w/X-Ring Managed Industrial Switch

Specification

Technology		RJ45 Ports	8 x 10/100 Base-T(X), Auto MDI/MDIX
Standards	IEEE 802.3 10Base-T Ethernet	Dual speed Combo Ports	2x RJ45 +2 SFP 100/1000 sockets
	IEEE 802.3u 100BaseTX, 100BaseFX	Console	1x RJ45 connector
	IEEE802.3x Flow Control and Back Pressure	Terminal Block	Redundant power with alarm system
	IEEE802.3ab 1000 Base-T	Mechanical	
	IEEE802.3z Gigabit fiber	Casing	IP 30 Protection Metal Case
	IEEE802.3ad Port trunk with LACP	Dimensions	72mm (W) x 105mm (D) x 152mm (H)
	IEEE802.1d Spanning Tree	Installation	DIN Rail and Wall Mount Design
	IEEE802.1w Rapid Spanning Tree	Regulatory Approvals	
	IEEE802.3af Power over Ethernet	Safety	FCC Part 15 class A, UL, cUL, EN60950-1
	IEEE802.1p Class of Service	EMS	EN61000-4-2 (ESD)
	IEEE802.1Q VLAN Tag		EN61000-4-3 (RS),
	IEEE 802.1x User Authentication-Radius		EN61000-4-4 (EFT)
			EN61000-4-5 (Surge) Level 3
Packet Buffer Memory	1 Mbits		EN61000-4-6 (CS), Level 3
Processing Type	Store-and-Forward		EN61000-4-8
Address Table Size	8K MAC addresses		EN61000-4-11
Power			EN61000-4-12
Input	External Power supply: 48VDC		EN61000-6-2
Power Consumption	Redundant power 48 VDC		EN61000-6-4
	116 Watts (Full Load)		
Environment		Environmental Test	IEC60068-2-27 (Shock)
Operating Temperature	Standard : -10 to 60°C		IEC60068-2-32 (Free Fall)
	E version: -40 ~75°C		IEC60068-2-6 (Vibration)
Storage Temperature	-40 to 85°C (-40 to 185° F)		
Ambient Relative Humidity	5% to 95% (Non-condensing)		
Interface			
LED Indicators	Per unit :PWR, PWR 1,PWR 2,Fault, Master, FWD		
	RJ45 Port : Link/Activity, Full duplex/collision		
	SFP Port :LNK/Activity,		
	1000T:LNK/ACT,1000M		

Ordering information

Part Number	Product Name	Description
8350-700	IESP-M082C	8 10/100TX + 2 10/100/1000T/ Mini-GBIC Combo w/ 8 PoE Injector Managed Industrial Switch, -10C to 60C
8350-705	IESP-M082CE	8 10/100TX + 2 10/100/1000T/ Mini-GBIC Combo w/ 8 PoE Injector & Wide Operating Temperature (-40C~75C) Managed Industrial Switch