

6 10/100/1000T + 2 10/100/1000T/ SFP Combo w/ X-Ring Managed Industrial Switch



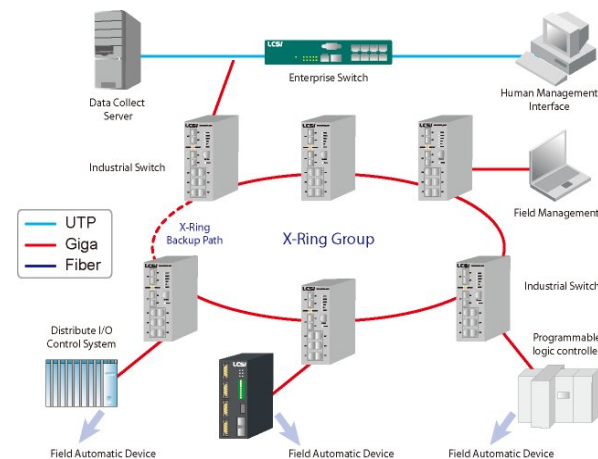
Highlights

- Flexible ring topology for faster fault recovery speed (Recovery time below 20 ms)
- Supports X-Ring, Dual Homing, Couple Ring and Dual Ring
- Optional LCSI management utility to simplify your network Management
- Redundant power inputs guarantee a non-stop operation
- Relay alarm for port breakdown, power fail
- 2 redundant power inputs on power jack and terminal block
- Input Power Isolation design for Telecom application

X-Ring Application

X-Ring Supports the fastest redundant recovery time which make a non-stop Ethernet connection.

If the primary communication path is disconnected the redundant ring technology provides a redundant path in the network. The following figure is a sample X-Ring application



Features

- Management
 - SNMP v1 v2c, v3/ Web/Telnet/CLI/Menu Driven**
- System Interface/Performance
 - RJ-45 port Supports Auto MDI/MDI-X Function
 - SFP(Mini-GBIC) Supports 100/1000 Dual Mode
 - Store-and-Forward Switching Architecture
 - Back-plane (Switching Fabric): 16Gbps
- VLAN
 - Port Based VLAN
 - Supports 802.1 Q Tag VLAN
 - GVRP
 - Double Tag VLAN (Q in Q)*
- Security
 - Port Security : MAC address entries/filter
 - IP Security: IP address security management to prevent unauthorized intruder.
 - Login Security: IEEE802.1X/RADIUS
- QoS (Quality of Service)
 - Supports IEEE 802.1p Class of Service,
 - Per port provides 4 priority queues
 - Port Base, Tag Base, IPv4 Type of service, IPv4/IPv6 Different Service Priority
- X-Ring
 - Supports X-Ring, Dual Homing, Couple Ring and Dual Ring Topology
 - Provide redundant backup feature and the recovery time below 20ms
- Provide DHCP Client/ DHCP Server/ IP Relay functions
- Supports TFTP firmware update, TFTP backup and restore.
- Port Trunk with LACP: 4 Trunk groups/Maximum 4 trunk members
- Supports SNTP to synchronize system clock in Internet
- Supports SMTP Server and 6 e-mail accounts for receiving event alert
- Supports IGMP snooping v1,v2 ; 256 multicast groups and IGMP query
- Provide DNS client feature and Supports primary and secondary DNS server
- Supports 3 port mirroring types- RX ;TX and both packet
- Supports binary configuration file for system quick installation
- Supports LLDP to allow switch to advise its identification and capability on the LAN**
- Input Power Isolation design for Telecom application, Pass Hi-Pot test~1.5KV

* Future release

** Optional

6 10/100/1000T + 2 10/100/1000T/ SFP Combo w/ X-Ring Managed Industrial Switch

Specification

Technology		Mechanical	
Standards	IEEE 802.3 10Base-T Ethernet	Casing	IP 30 Protection Metal case
	IEEE 802.3u 100Base-TX	Dimensions	72mm (W) x 105mm (D) x 152mm (H)
	IEEE802.3ab 1000Base-T	Installation	DIN Rail and Wall Mount Design
	IEEE802.3z Gigabit fiber	Environment	
	IEEE802.3x Flow Control and Back Pressure	Operating Temperature	Standard version: -10 ~ -60
	IEEE802.3ad Port trunk with LACP	Storage Temperature	-40 to 85
	IEEE802.1d Spanning Tree	Ambient Relative Humidity	5% to 95% (Non-condensing)
	IEEE802.1w Rapid Spanning Tree	Regulatory Approvals	
	IEEE802.1p Class of Service	Safety	UL, cUL, CE/EN60950-1
	IEEE802.1Q VLAN Tag	EMI	FCC Class A
	IEEE 802.1x User Authentication-Radius	EMS	CE EN61000-4-2 (ESD)
	IEEE802.1ab LLDP**		CE EN61000-4-3 (RS)
Packet Buffer Memory	1Mbits		CE EN-61000-4-4 (EFT)
Processing Type	Store-and-Forward		CE EN61000-4-5 (Surge)
Address Table Size	8K MAC addresses		CE EN61000-4-6 (CS)
Bandwidth Control	Ingress Packet Filter and Egress Rate Limit		CE EN61000-4-8,
	Broadcast/Multicast Packet Filter Control		CE EN61000-4-11,
Interface			CE EN61000-4-12,
LED Indicators	Per unit :PWR, RM, Fault		CE EN61000-6-2,
	Giga Copper :Link/Activity, Speed		CE EN61000-6-4
	SFP: Link/Activity	Environmental Test	
RJ45 Ports	6 Ports 10/100/1000T	IEC60068-2-32 (Free fall),	
	2 Ports 10/100/1000T (Combo Ports)	IEC60068-2-27 (Shock),	
Fiber Ports	2 Ports 100/1000 SFP sockets (Combo Ports)	IEC60068-2-6 (Vibration)	
Console	1x RJ45 connector	Warranty	5 years
Terminal Block	Redundant power input design with alarm system		
Power			
Input Voltage	DC 24-48V		
Power Consumption	18 Watts (Open issue)		
Reverse Polarity Protection	Present		

Ordering information

IGS-M062C

P/N: 8350-605

6 10/100/1000T + 2 10/100/1000T/ SFP Combo w/ X-Ring Managed Industrial Switch, -10C to 60C