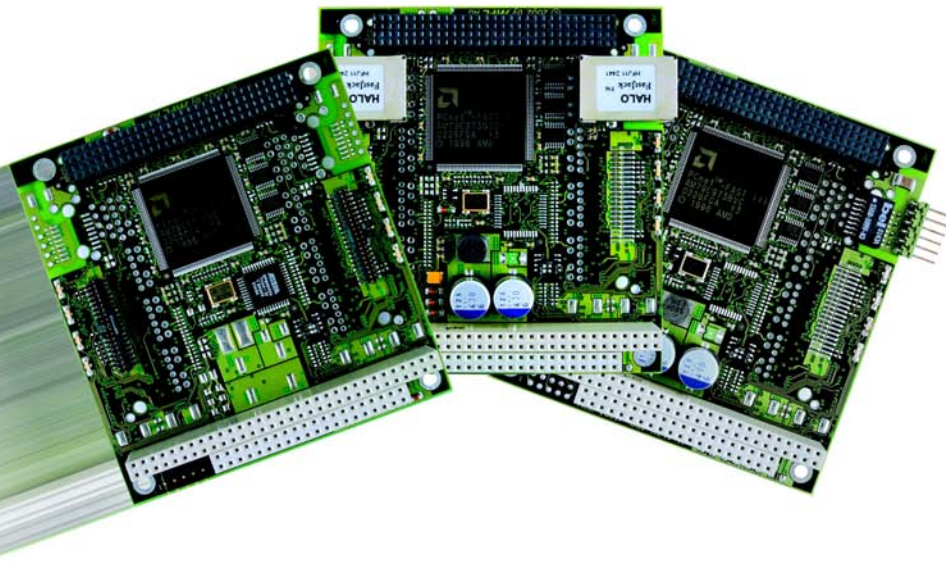


# LAN104

## Single & Dual 10/100 Ethernet PC/104-Plus Modules

### General Description

The LAN104-Family consists of highly integrated and robust PC/104-Plus compliant Ethernet Modules for industrial use. With a single PC/104-Plus module your system can be expanded with up to two 10/100 Mbps Fast Ethernet controller! The controllers are AMD PCnet™ compatible, allowing the use of PCnet™ Family driver and diagnostic software. Furthermore the LAN104-Product Family offers a wide range of interface options to match your system requirements: a simple header, an onboard RJ45 or a MII connector. Over the MII a fibre optic 100BaseFX can be used. These, and other unique features, make the LAN104-Product Family to the ideal solution for industrial network applications.

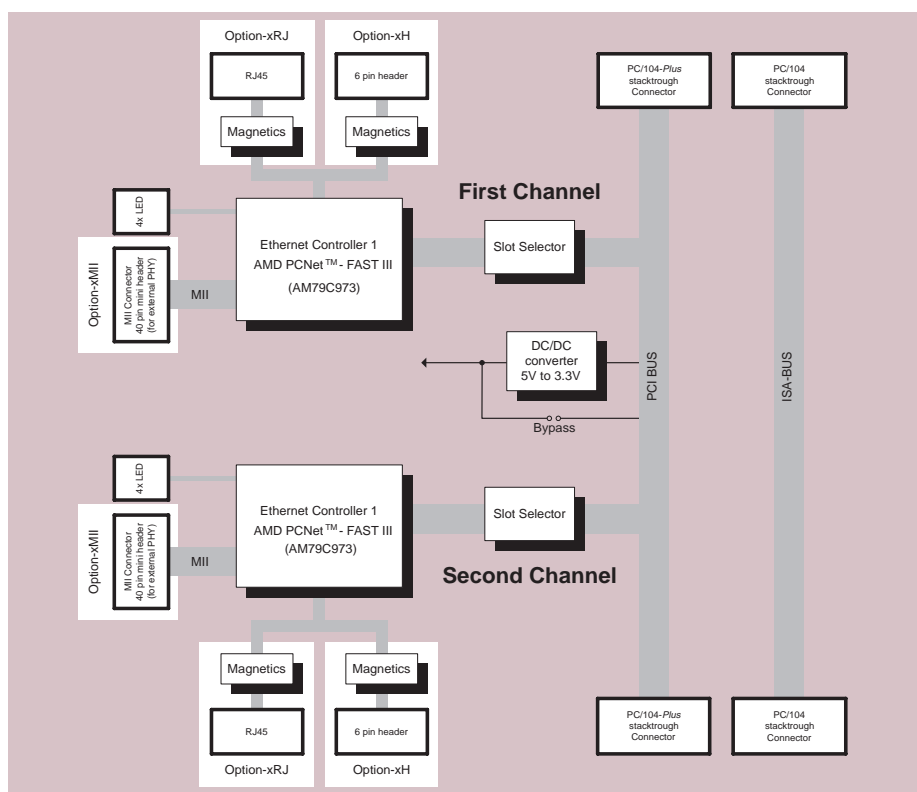


### LAN104 specialities

- Up to 2 Fast Ethernet controllers on a single PC/104-Plus board
- Supports IEEE 802.3u autonegotiation
- Drivers for all major OS (AMD PCnet™ compatible)
- 3 different interface options: RJ45, 2.54 mm header, MII connector
- Allowing fibre optic 100Base-FX interface connection
- Status LED's onboard
- Runs with 5V input power only

### Those features make

the LAN104-Product Family to the ideal solution in industrial applications where a fast, flexible, rugged communication interface is required. The product can be used in applications like servers, routers, firewalls and more.



# Technical Features LAN104

## Board Key Data

Network Controller	PCnet™-FAST III Ethernet Controller	up to two controllers onboard
Physical Interface (PHY)	10BASE-T and 100BASE-TX onboard Supports IEEE 802.3u autonegotiation	RJ45 connectors or 6-pin header 10/100Mbps, half/full-duplex operation
Media Access Controller (MAC)	MII access possible for external physical interface	40-pin mini header
Status LED's	4 LED's for each channel	user configurable
Host Interface	PC/104-Plus compliant PCI specification revision 2.2 compliant	stackthrough module supports both 5.0V and 3.3V signaling
Power	Runs with 5V input power only	5V / 3.3V converter onboard

## Physical / Power

Size (length x width x height)	90.2 x 95.9 x 11 mm 3.550 x 3.775 x 0.435 inch	PC/104-Plus compliant stackthrough module
Weight	80g / 0.177 lbs	fully equipped LAN104-2RJ
Power	+5VDC ± 5%	input over PCI connector
Power consumption	Typically 1W Typically 2W	LAN104-1RJ (one ethernet controller) LAN104-2RJ (two ethernet controllers)
Temperature Range	-20°C up to 70°C	optional -40°C up to 75°C
Humidity	5% - 95% non condensing	optional coating available

## Operating Systems

Compatible with the existing PCnet™ Family driver and diagnostic software!

- Microsoft Windows NT 3.51, 4.0, 2000
- Microsoft Windows 95, 98, ME, XP
- Microsoft Windows CE
- Novel NetWare 3.11, 3.12 & 4.1x, 5 Server
- Macintosh Mac OS 8.x/9.x
- Packet driver for Unix Client, UnixWare 7.0, SCO Unix
- Linux (Red Hat, Caldera, SlackWare, S.U.S.E, Debian ...)

## LAN104 versions

Product number	Number of Ethernet channels	Interface Options		
		RJ45	6-pin header	40-pin header
LAN104-1RJ	1	●		
LAN104-1H	1		●	
LAN104-1MII	1			●
LAN104-2RJ	2	●		
LAN104-2H	2		●	
LAN104-2MII	2			●

Various cable accessories suitable for the LAN104-Family are available. Please note, not always all versions are available from stock. Besides the LAN104 Family, MPL provides a SPIDERLAN product line consisting of Ethernet-Switch modules with up to 8 ports.

## Other MPL PC/104 Peripherals

Product Family	Function	Form Factor
OSCI	Four or eight RS232/RS485/RS422 serial lines	PC/104-Plus
SPIDERLAN	Ethernet-Switch modules with up to 8 ports	PC/104-Plus
PATI	PowerPC controlled Analog- and Timer-IO module	PC/104-Plus
PCCARD	PCMCIA PC Card adapter with two slots	PC/104-Plus
IDE2CF / IDE2PCC	IDE to CompactFlash or IDE to PC Card adapter	PC/104

## Other MPL Products

Embedded CPU Boards	Embedded, rugged Industrial CPU boards with PowerPC, x86 and ARM CPU's. Products with lowest power consumption, long-term availability and highest reliability.
Industrial PCs	Fanless, rugged Packed Industrial PCs with Intel CPUs in various housings and with many accessories. Products for extended temperature (-40° up to +75°C) and with long-term availability.
Panel PCs	Fanless, IP65/NEMA4 protected Panel PCs (all around). Solutions with 6" - 19" LCDs and Touch in special aluminum or stainless steel case.
Engineering & Support	Professional engineering, support and consulting through MPL engineers on Hardware and Software.