

MILTECH™ 910PoE

A Managed Military Gigabit PoE Switch

PRODUCT DESCRIPTION

Techaya's MILTECH™ 910PoE is a military-grade Power over Ethernet (PoE+) switch that supports 60W of PoE on all 8 gigabit Ethernet 10/100/1000 ports - giving a total POE power budget of 330 watts to power both 802.3af and 802.3at standard devices.

MILTECH™ 910PoE is ideal for mobile Ethernet-equipped platforms, such as vectronic, ground vehicles and aerial applications where traditional power sources have limited availability and supports COTS guidelines for PoE-enabled cameras, WiFi access points, mesh nodes and other devices.

Leveraging best-in-class switching technology from Techaya,

the MILTECH™ 910PoE is fully managed with advanced network features such as switching protocols, virtual LANS (VLANS), traffic prioritization, and bandwidth aggregation.

Developed for military and harsh environment applications, the MILTECH™ 910PoE features mechanical packaging enhancements designed for MIL-STD-810F airborne and ground environmental compliance and high reliability. The unit has been especially hardened to improve ingress, impact, and shock/vibration protection, as well as eliminate all moving parts through passive cooling, and interface through sealed MIL-D-38999 circular connectors.

SPECIFICATIONS

ETHERNET PORTS:	<ul style="list-style-type: none"> 8 x PoE + 10/100 /1000 ports
NETWORKING:	<ul style="list-style-type: none"> Spanning Tree (802.1d), RSTP (802.1w) and multiple Spanning Tree (802.1S) for fast recovery rings Security via Radius Authentication 802.1x, Port Security, Port Mirroring Layer 3 Static routing Multicasting (IGMP Snooping), GARP, GMRP, and GVRP Broadcasting and flooding Control up to 8K Groups. 802.1q Tagged based VLAN up to 4K VLAN groups. QoS Multi-Layer Classifier, 802.1p, ToS/DSCP traffic classification. WFQ, Strict Queuing. Bridge support for Q-in-Q. Link Aggregation 802.3AD. WEB, CLI, Telnet Management Rmirror* Port Protection: 1+1 port protection, 1:1 port protection, 1:N port protection* G.8032 ring protection* DHCP option 82 relay* L2CP tunneling* Protocol-based VLAN* 1588v2 PTP with two-step clock* <p>* Available in 1-910POE-100</p>
CONNECTORS:	<ul style="list-style-type: none"> Power Connector Type: D38999/24WC04PN LAN Connector Type: TV07RW9-9S525 Management R5-232 Type: TV07RW9-9S525 LED Indication Per Port (Link/Activity, Speed, PoE)
CHASSIS:	<ul style="list-style-type: none"> Machined rugged aluminum Conductively cooled w/custom internal heat-sinks Ingress protection against sand, dust and moisture Anodize Coating, MIL-A-8625, Type II, Class 2
STANDARDS:	<ul style="list-style-type: none"> MIL-STD-461E, MIL-STD-810F GM, IP68, MILSTD-1275, MILSTD-704



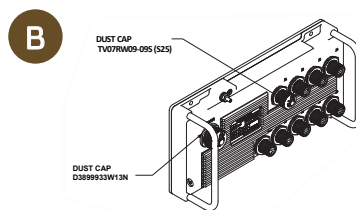
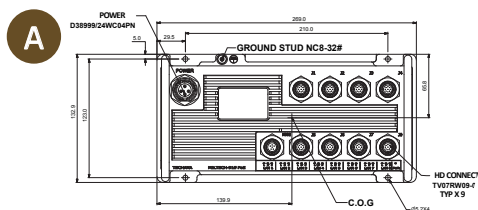


MILTECH™ 910PoE

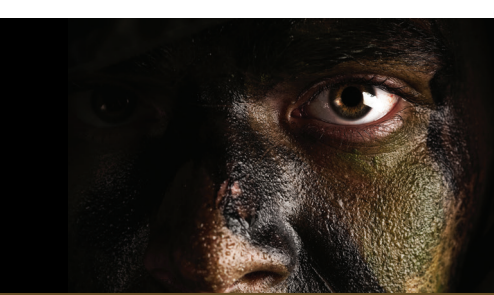
A Managed Military Gigabit PoE Switch

SPECIFICATIONS

PERFORMANCE:	<ul style="list-style-type: none"> • 26.8 Mpps wire speed forwarding rate • 20 Gbps maximum forwarding bandwidth • 8K MAC Address
STANDARDS COMPLIANCE:	<ul style="list-style-type: none"> • IEEE 802.1x MAC based Authentication • IEEE 802.1Q Vlan Tagging • IEEE 802.1P QoS • IEEE 802.1S Multiple STP • IEEE 802.1W Rapid STP • IEEE 802.1AD Link Aggregation • IEEE 802.1X
POWER PoE:	<ul style="list-style-type: none"> • Total PoE budget 330W • Max Consumption per port: 60W • Dynamic power allocation • PoE priority per port • Full comply to IEEE 802.af, IEEE 802.at • No Power degradation at +85C • Operates with 24VDC (18-32VDC) • No Need for additional PoE 48VDC input • Optional Gui /Web application for PoE management • MILSTD-1275 , MILSTD-704
ELECTROMAGNETIC:	<ul style="list-style-type: none"> • MIL-STD-461E Electromagnetic compatibility • CE-102, CS-114, CS-115, CS-116, RE-102, RS-103
ENVIRONMENTAL	<ul style="list-style-type: none"> • MILSTD-810F/G/GM: • Random vibration (514.5I) Bench Handling (516.6VI) High Temp.(501.5I,II) Low Temp.(502.5I) Humidity (507.5II) Air Pressure (500.5I,II) Blowing Rain (506.5I) Immersion (512.5I) Salt Atmosphere (509.5I) Blowing Dust (510.5I) Loose Cargo Vibration (514.6II) Wind Analysis. • IP68
PHYSICAL:	<ul style="list-style-type: none"> • Dimensions: 269mm (L) x 133(W) x 71(H), including connectors & hardware • Dimensions: 10.5" (L) x 5.2"(W) x 2.79"(H), including connectors & hardware • Weight: 1.2kg
INSTALLATION:	<ul style="list-style-type: none"> • Set of four 4-4.5 threads for mounting to any flat surface. • Carrying handles - optional
COOLING:	<ul style="list-style-type: none"> • No Moving Parts. Passive Cooling
OPERATING TEMP:	<ul style="list-style-type: none"> • -45°C to +85°C (-49°F to +185°F) Cold Start-Up
STORAGE TEMP:	<ul style="list-style-type: none"> • -45°C to +85°C (-49°F to +185°F)



*All measurements are in millimeters



MILTECH™ 910PoE

A Managed Military Gigabit PoE Switch

ORDERING INFORMATION

PART NUMBER	DESCRIPTION
1-910PoE-000	<ul style="list-style-type: none">• Military Managed PoE+ Gigabit Ethernet Switch, 8 x10/100/1000TX
1-910PoE-100	<ul style="list-style-type: none">• Enhanced Military Managed PoE+ Gigabit Ethernet Switch, 8 x10/100/1000TX
2-CBL910PoEPW	<ul style="list-style-type: none">• Power Harness for MILTECH910PoE
2-CBL910PoELN	<ul style="list-style-type: none">• LAN Harness for MILTECH910PoE
2-CBL910PoEMNG	<ul style="list-style-type: none">• LAN and management Harness for MILTECH910PoE